

## WIRELESS PERIPHERALS

### Wireless call pendant



SNI-112

#### Description

Wireless call push-button which can be fitted into pendant. Tough and water resistant.

Each pendant is associated to one Room Control Panel in order to identify the patient call. Designed to be continuously worn and used in emergency situations for communication with its designated Room Control Panel .

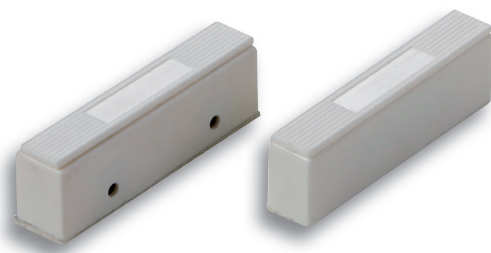
The radio channel is programmable, to be used with the wireless receivers and to avoid interferences with other wireless bracelets existing in the hospital or nursing home.

Uses a 12 V alkaline battery. Includes low battery indicator.

#### SPECIFICATIONS

Power supply	Alkaline Battery 12V (3LR50)
Frequency	868 MHz
Encoding	Visonic PowerCode
Protection Index	IP65
Operating temperature	0°C to 49 °C
Dimensions	32 x 53 x 17mm.
Weight	22g.

### Wireless door / window sensor



SNI-120

#### Description

SNI-120 is a wireless transmitter by magnetic contact, designed to replace ordinary magnetic contacts in wireless applications.

Easy to install, it is a very efficient device for the protection or control of doors, windows and other openings. The transmitter can be installed in wooden frames, PVC windows and many other surfaces.

Each sensor is associated to a Room Control Panel to identify the activation of the sensor.

The radio Channel is programmable to be used with the wireless receivers and to avoid interferences with other wireless devices in the hospital or nursing home.

#### SPECIFICATIONS

Power supply	Alkaline Battery 12V (3LR50)
Frequency	868 MHz
Encoding	Visonic PowerCode
Transmission time	2 secs. (aprox.)
Operating temperature	0°C to 40 °C
Dimensions	87 x 25.5 x 15mm.
Weight	25.5g